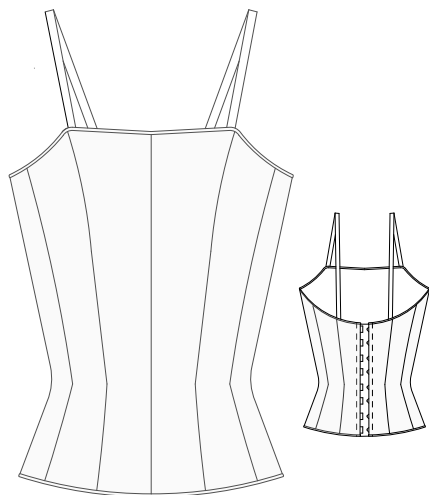


Pattern 140

Russian Bodice



12 Piece Russian 'All-in-One' bodice
 Hidden boning
 Straight front, full coverage
 Straight back with hook & eye closure
 Corded top & bottom
 Not recommended to pair with
DressMakers Choice TUTU Style 300

Suggested Fabrics	
Bodice Top Fabric	Lining
Bridal Satins	Twill
Brocades	Twill
Faille (bengaline)	Twill
Twill	Broadcloth
Mock-up Fabric	Ticking

Girls Fabric & Notions by Yard						
Size	Y4	Y5	Y6	Y7	Y8	Y9
Bodice Fabric	3/4	7/8	7/8	1	1	1
Lining Fabric	2/3	2/3	3/4	3/4	3/4	7/8
Boning 1/4" spiral	1 3/4	1 7/8	2	2 1/8	2 1/4	2 3/8
Shoulder Elastic 1/2"	3/4	7/8	7/8	7/8	1	1
Hook & Eye Tape	1/4	1/4	1/4	1/3	1/3	1/3
Seam Binding Single Fold 1/2"	2 1/2	2 5/8	3	3 1/8	3 1/4	3 1/2
Piping cord 1/8"	1 7/8	2	2 1/8	2 1/8	2 1/4	2 1/3
* Grosgrain Ribbon 7/8"	7/8	7/8	7/8	1	1	1

* not needed if attaching a TUTU

Adult Fabric & Notions by Yard						
Size	A1	A2	A3	A4	A5	A6
Bodice Fabric	1	1	1 1/8	1 1/8	1 1/8	1 1/8
Lining Fabric	3/4	3/4	7/8	7/8	7/8	7/8
Boning 1/4" spiral	2 1/3	2 3/8	2 1/2	2 1/2	2 5/8	2 3/4
Shoulder Elastic 1/2"	1	1 1/8	1 1/8	1 1/8	1 1/8	1 1/8
Hook & Eye Tape	1/3	1/3	3/8	3/8	3/8	3/8
Seam Binding Single Fold 1/2"	3 1/2	3 5/8	3 5/8	3 3/4	3 7/8	4
Piping cord 1/8"	2 1/8	2 1/4	2 1/3	2 3/8	2 1/2	2 5/8
* Grosgrain Ribbon 7/8"	7/8	7/8	1	1	1 1/8	1 1/8

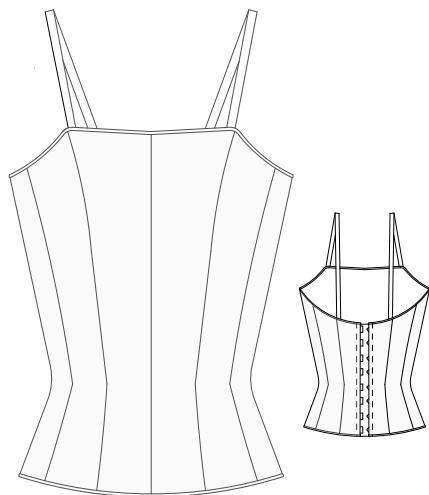
* not needed if attaching a TUTU

Based on 58 inch wide fabric.

For other widths download the
 conversion charts at
www.tutupatterns.com

Pattern 140

Russian Bodice



12 Piece Russian 'All-in-One' bodice
 Hidden boning
 Straight front, full coverage
 Straight back with hook & eye closure
 Corded top & bottom
 Not recommended to pair with
DressMakers Choice TUTU Style 300

Suggested Fabrics	
Bodice Top Fabric	Lining
Bridal Satins	Twill
Brocades	Twill
Faille (bengaline)	Twill
Twill	Broadcloth
Mock-up Fabric	Ticking

Girls Fabric & Notions by Meter						
Size	Y4	Y5	Y6	Y7	Y8	Y9
Bodice Fabric	0.7	0.8	0.9	0.9	0.9	0.9
Lining Fabric	0.6	0.7	0.7	0.7	0.7	0.8
Boning 0.6 cm spiral	1.6	1.7	1.8	2	2.1	2.2
Shoulder Elastic 1.3 cm	0.7	0.8	0.8	0.8	0.9	0.9
Hook & Eye Tape	0.2	0.3	0.3	0.3	0.3	0.3
Seam Binding Single Fold 1.3 cm	2.2	2.4	2.6	2.8	3	3.2
Piping cord 0.3 cm	1.7	1.8	1.9	2	2.1	2.1
* Grosgrain Ribbon 2.2 cm	0.8	0.8	0.8	0.9	0.9	0.9

* not needed if attaching a TUTU

Adult Fabric & Notions by Meter						
Size	A1	A2	A3	A4	A5	A6
Bodice Fabric	0.9	1	1	1	1	1.1
Lining Fabric	0.7	0.7	0.8	0.8	0.8	0.8
Boning 0.6 cm spiral	2.1	2.2	2.3	2.4	2.4	2.5
Shoulder Elastic 1.3 cm	0.9	1	1	1	1	1
Hook & Eye Tape	0.3	0.3	0.3	0.3	0.3	0.4
Seam Binding Single Fold 1.3 cm	3.1	3.2	3.4	3.4	3.6	3.6
Piping cord 0.3 cm	1.9	2	2.1	2.2	2.3	2.4
* Grosgrain Ribbon 2.2 cm	0.8	0.8	0.9	0.9	1	1.1

* not needed if attaching a TUTU

Based on 150 cm wide fabric.

For other widths download the
 conversion charts at
www.tutupatterns.com

Size Chart

Inches	Girls						Adult					
	Y4	Y5	Y6	Y7	Y8	Y9	A1	A2	A3	A4	A5	A6
Size	Y4	Y5	Y6	Y7	Y8	Y9	A1	A2	A3	A4	A5	A6
Bust	24	26	28	30	32	34	30	32	34	36	38	40
Waist	22	23	24	25	26	27	22	24	26	28	30	32
Hips	26	28	30	32	34	36	32	34	36	38	40	42
Crotch Length	20 1/2	21 3/4	23	24 1/4	25 1/2	26 3/4	25 1/2	26 1/4	27	27 3/4	28 1/2	29 1/4
Back Length	10 3/4	11 1/2	12 1/4	13	13 3/4	14 1/2	14 7/8	15 1/4	15 5/8	16	16 3/8	16 3/4

If your dancer's measurements do not match the charts exactly use the following guidelines.

Bodice: purchase pattern by bust measurement.

Tutu: purchase pattern by crotch length.

All patterns have instructions for adjustments.

Sewing skills rated as intermediate or above.

Metric cm	Girls						Adult					
	Y4	Y5	Y6	Y7	Y8	Y9	A1	A2	A3	A4	A5	A6
Size	Y4	Y5	Y6	Y7	Y8	Y9	A1	A2	A3	A4	A5	A6
Bust	61	66	71	76	81	86	76	81	86	91	97	102
Waist	56	58	61	64	66	69	56	61	66	71	76	81
Hips	66	71	76	81	86	91	81	86	91	97	102	107
Crotch Length	52	55	58	62	65	68	65	67	69	70	72	74
Back Length	27	29	31	33	35	37	37.6	38.6	39.6	40.6	41.6	42.6

All pattern sales are final. No returns or exchanges.